

THIS INSTRUMENT PREPARED BY
DAVID P. LINDLEY

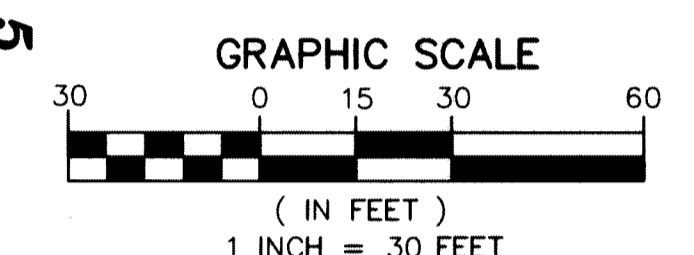
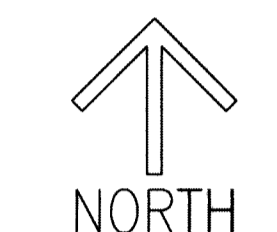
CAULFIELD and WHEELER, INC.
SURVEYORS - ENGINEERS - PLANNERS
7900 GLADES ROAD, SUITE 100
BOCA RATON, FLORIDA 33434 - (561)392-1991
CERTIFICATE OF AUTHORIZATION NO. LB3591

FIELDS AT GULFSTREAM POLO PUD - PLAT THREE

A PLANNED UNIT DEVELOPMENT
BEING A REPLAT OF TRACTS F, G, H AND J, FIELDS AT GULFSTREAM POLO PUD - PLAT TWO, AS RECORDED IN PLAT BOOK 125, PAGES 130
THROUGH 137 AND A PORTION OF BLOCK 28, PALM BEACH FARMS CO. PLAT NO. 3, ACCORDING TO THE PLAT THEREOF, AS RECORDED IN PLAT
BOOK 2, PAGE 45 THROUGH 54 ALL OF THE PUBLIC RECORDS OF PALM BEACH COUNTY, FLORIDA, LYING IN SECTIONS 29 AND 32, TOWNSHIP 44
SOUTH, RANGE 42 EAST, PALM BEACH COUNTY, FLORIDA

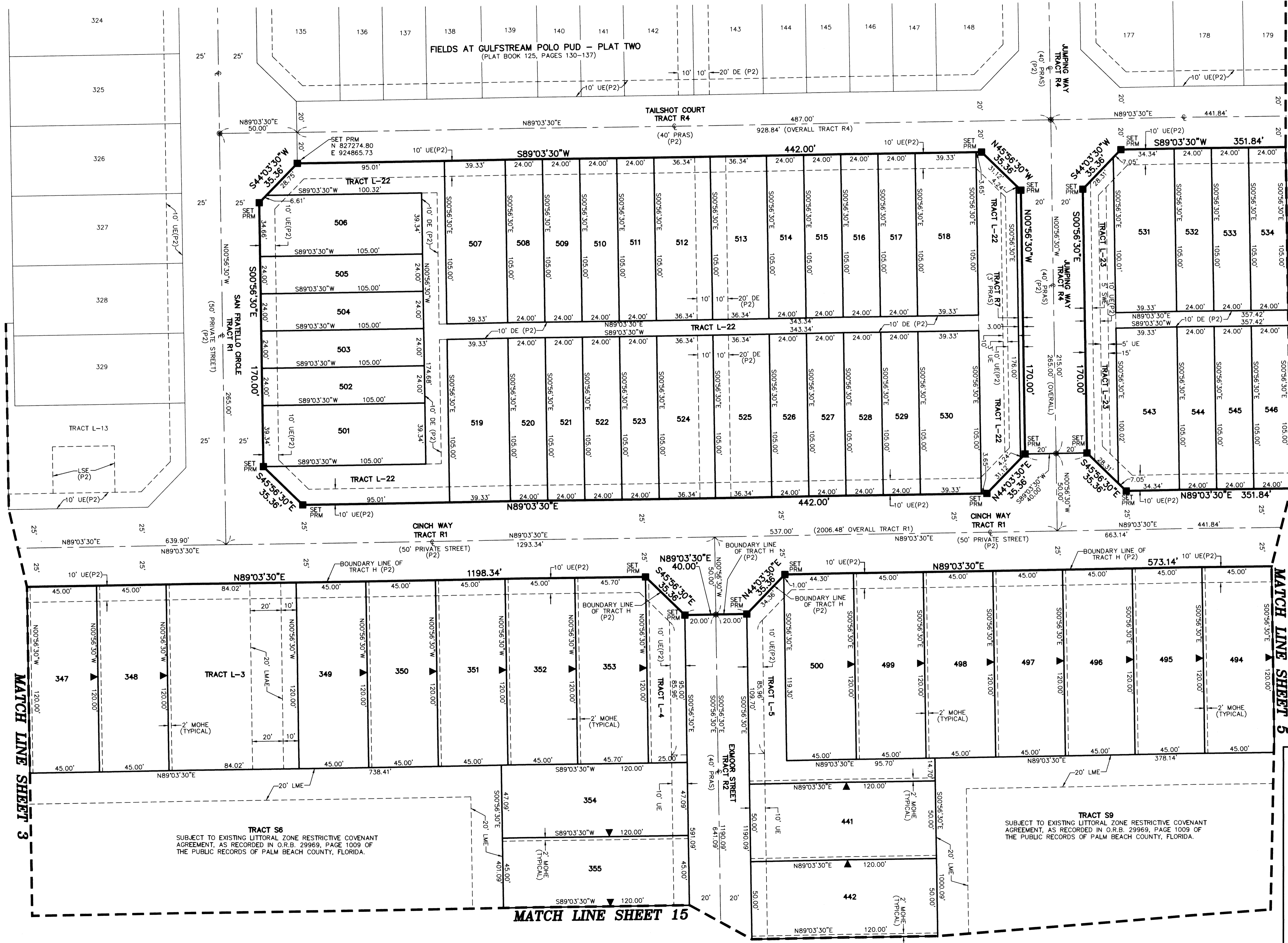
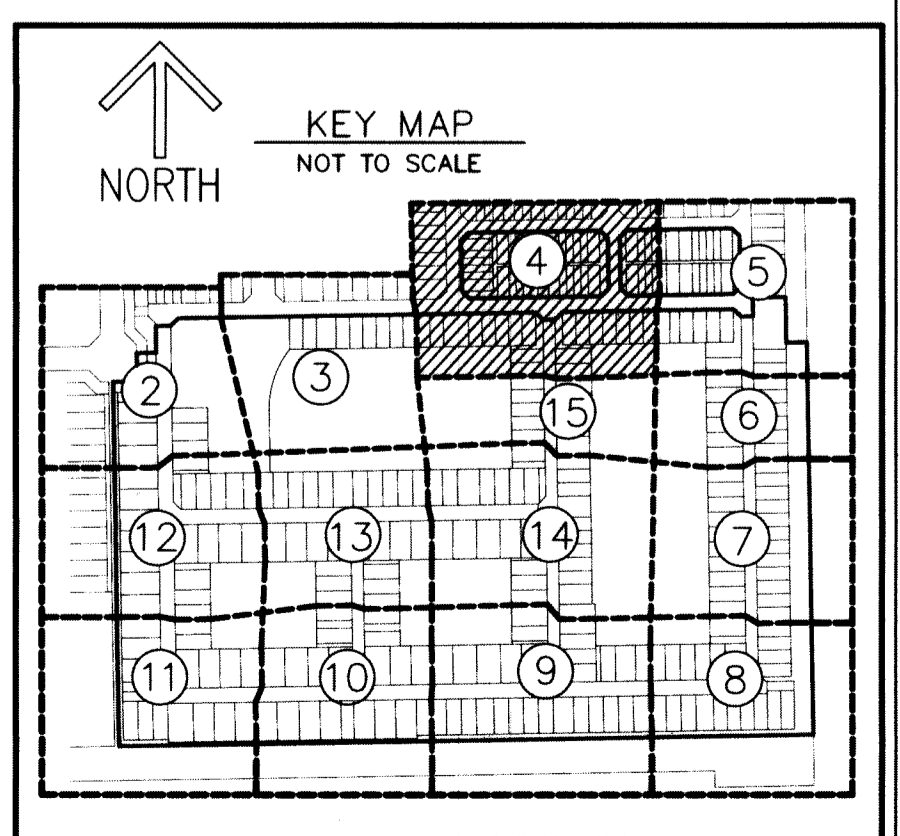
165

SHEET 4 OF 15



NOTES
COORDINATES, BEARINGS AND DISTANCES
COORDINATES SHOWN ARE GRID
DATUM = NAD 83 (90/98 ADJUSTMENT)
ZONE = FLORIDA EAST
LINEAR UNIT = US SURVEY FEET
COORDINATE SYSTEM 1983 STATE PLANE
TRANSVERSE MERCATOR PROJECTION
ALL DISTANCES ARE GROUND, UNLESS OTHERWISE NOTED
SCALE FACTOR = 1.0000236
GROUND DISTANCE X SCALE FACTOR = GRID DISTANCE
BEARINGS AS SHOWN HEREON ARE GRID DATUM
NAD 83 (90/98 ADJUSTMENT), FLORIDA EAST ZONE.

LEGEND/ABBREVIATIONS
C - CENTERLINE
Δ - DELTA (CENTRAL ANGLE)
(C) - CALCULATED
CB - CHORD BEARING
CD - CHORD DISTANCE
DE - DRAINAGE EASEMENT
E - EASTING (WHEN USED WITH COORDINATES)
L - ARC LENGTH
LAE - LIMITED ACCESS EASEMENT
LB - LICENSED BUSINESS
LMAE - LAKE MAINTENANCE ACCESS EASEMENT
LME - LAKE MAINTENANCE EASEMENT
LSE - LIFT STATION EASEMENT
L.W.D.D. - LAKE WORTH DRAINAGE DISTRICT
N - NORTHING (WHEN USED WITH COORDINATES)
MOHE - MAINTENANCE AND OVERHANG EASEMENT
O.R.B. - OFFICIAL RECORD BOOK
PRAS - PRIVATE RESIDENTIAL ACCESS STREET
PBCUE - PALM BEACH COUNTY UTILITY EASEMENT
R - RADIUS
UE - UTILITY EASEMENT
SWE - SIDEWALK EASEMENT
(P) - PALM BEACH FARMS CO. PLAT NO. 3
(PLAT BOOK 2, PAGES 45-54)
(P1) - FIELDS AT GULFSTREAM POLO PUD - PLAT ONE
(PLAT BOOK 123, PAGES 80-95)
(P2) - FIELDS AT GULFSTREAM POLO PUD - PLAT TWO
(PLAT BOOK 125, PAGES 130-137)
▲ - INDICATES "ZERO" SIDE OF LOT LINE
■ PRM - DENOTES PERMANENT REFERENCE MONUMENT
4" x 4" x 24" CONCRETE MONUMENT WITH
ALUMINUM DISK STAMPED "C&W PRM LB3591"
● PCP - DENOTES PERMANENT CONTROL POINT
NAIL AND METAL DISK STAMPED "PCP LB3591"



TRACT S6
SUBJECT TO EXISTING LITTORAL ZONE RESTRICTIVE COVENANT
AGREEMENT, AS RECORDED IN O.R.B. 29969, PAGE 1009 OF
THE PUBLIC RECORDS OF PALM BEACH COUNTY, FLORIDA.

TRACT S9
SUBJECT TO EXISTING LITTORAL ZONE RESTRICTIVE COVENANT
AGREEMENT, AS RECORDED IN O.R.B. 29969, PAGE 1009 OF
THE PUBLIC RECORDS OF PALM BEACH COUNTY, FLORIDA.